



LED Flood Light

IP66



CE

ROHS



FY led flood light can be widely used in industrial area, outdoor like tunnel , gardens, outdoor plaza, park; indoor for factory, warehouse and so on.

Features

Stove-piped heat dissipation structure design to make perfect heat release.

Philips Lumileds 3030chips

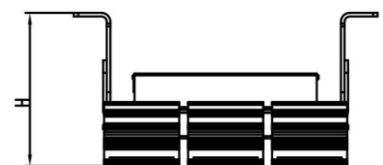
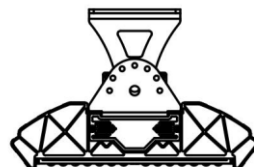
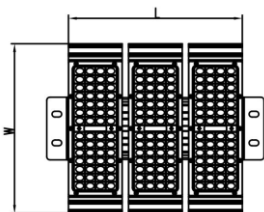
Modular design,

Installation holder can adjustable

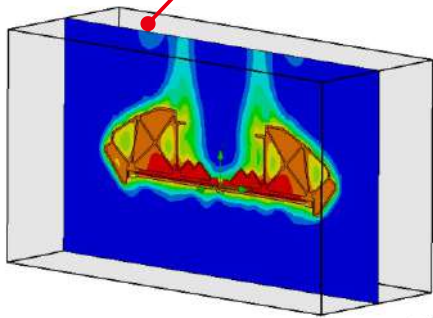
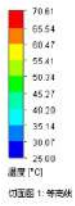
UL, cUL,CE ROHS

Technical parameters

Model	FY-FL-100W	FY-FL-150W	FY-FL-200W	FY-FL-300W	FY-FL-500W
Power	100W	150W	200W	300W	500W
Weight	4.0Kg	4.3Kg	5.3Kg	7.8Kg	14Kg
Size	L252*266*H171	L272*266*H171	L366 *266*H171	L554*266*H171	L930*266*H171
Lumen	130 lm/W				
Input Voltage	AC100-277V/ AC200-480V 50Hz/60Hz				
CCT(K)	4000K, 4500K, 5000K, 5700K				
BeamAngle	85 Degree				
CRI	70/80 Ra				
Warranty	5 Years				

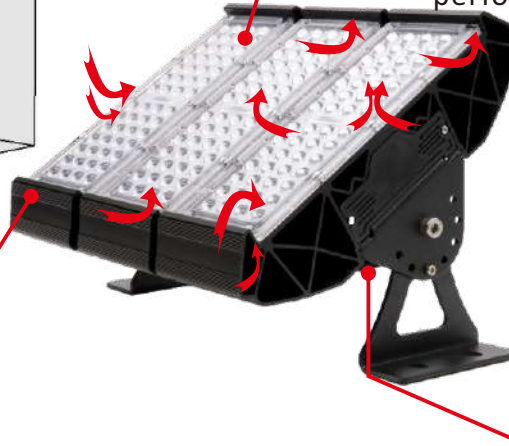


Stove-piped heat dissipation structure design



Lens

1. Japan Teijin high transmittance PC material
2. 8.5 degree lens makes perfect light performance, no astigmatism



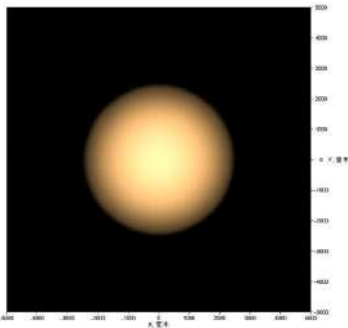
Heatsink

1. Special stove-piped heat dissipation structure design, makes perfect heat release without too heavy weakness
2. 6063 aluminum
3. Modular design, flexible wattage

Driver



Meanwell, FY driver



Design renderings



real shot (from front)



real shot (from side)

Installation holder

Can adjust the installation angle

